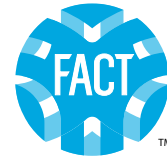




High Capacity Cyst, Chlorine Taste & Odor and Dirt Reduction Filter



FEATURES & BENEFITS

- Chlorine Taste and Odor Reduction
- Cyst Reduction Based on NSF/ANSI Standard 53*
- High Adsorptive Capacity and Efficiency*
- Low Pressure Drop Allows for High Flow Rate
- High Sediment Filter – Resistant to Clogging
- Longer Filter Life vs. GAC Filters



Tested and certified by WQA to NSF/ANSI 42 for material requirements only.

FACT® FACTS

KX Technologies® FACT® Media is made using various adsorbents immobilized by fibrillated fibers. The Media is produced in a wet laid process yielding an extremely uniform media, where high percentages of very small adsorbents can be immobilized efficiently.

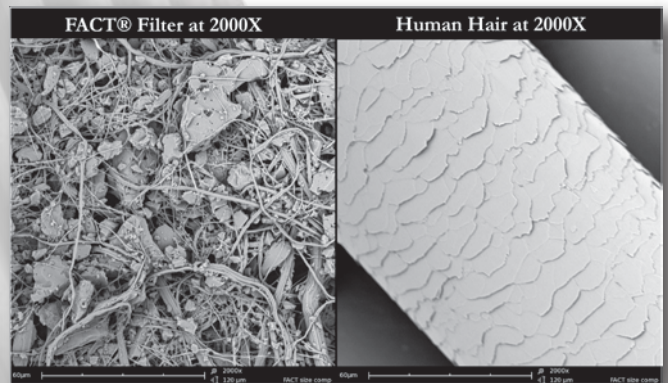
Smaller fibers produce a larger relative pore area for a given pore size. The resulting structure gives a lower overall pressure drop and a higher dirt capacity. Unlike typical cellulose fibers which have fiber diameters between 15 and 30 microns, the KX® FACT® core fibers can be as small as 50 nanometers in diameter, 200 times smaller. The MATRIKX® + HC filter meets NSF/ANSI Standard 53, Turbidity and Cyst Reduction, including Cryptosporidium, Giardia, Entamoeba and Toxoplasma. This filter will fit into multi-round housings.

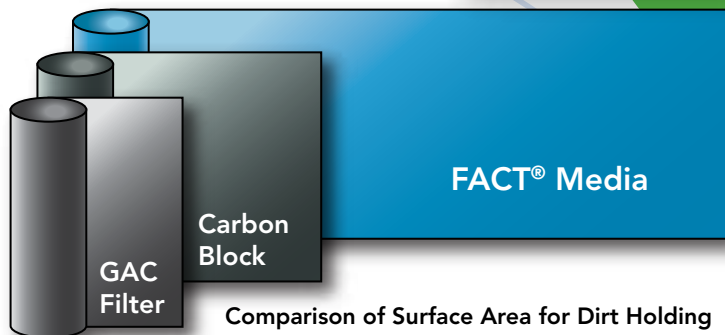
TECHNICAL SPECIFICATIONS AND ORDERING INFORMATION

Part Number	O.D. x Length (nominal)	Chlorine Taste & Odor Reduction Capacity @ Flow Rate*	Nominal μ m Rating*	Initial Δ P @ Flow Rate*
1063-15-BA-K233	2.5" x 10"	20,000 gallons @ 1 gpm 8,000 gallons @ 3 gpm	1 μ m	1 psid @ 1 gpm 3.5 psid @ 3 gpm
1063-15-BB-K234	4.25" x 10"	80,000 gallons @ 4 gpm	1 μ m	12 psid @ 4 gpm

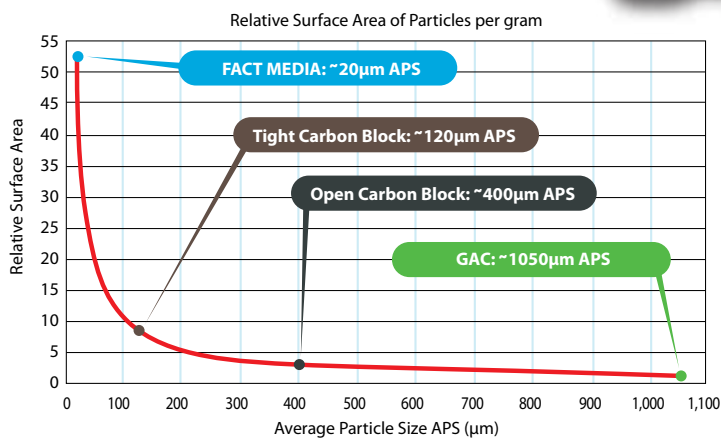
*Based on Manufacturer's Internal Testing

A comparison between a human hair at 2000x magnification and KX Technologies' FACT® media at 2000x magnification illustrate how small the fibers are. These smaller fibers give a relative bonded area producing much higher sheet strengths with smaller amounts of fiber resulting in immobilization of a wide range of particle types and sizes.

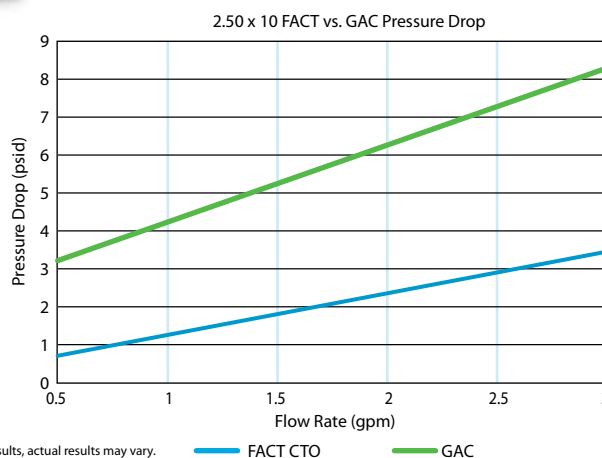




Comparison of Surface Area for Dirt Holding



This internal test data shows typical results, actual results may vary.



ORDER INFORMATION

To order, contact an authorized Master Stocking Distributor (no factory-direct ordering or shipping).

IMPORTANT NOTICE: Performance claims are based on a complete system, including a filter, housing, and connection to a pressurized water source. This filter must be placed in an appropriate system, and operated according to the system's specifications in order to deliver the claimed performance. It is essential to follow operational, maintenance, and filter replacement requirements, as directed for each application, for this filter and system to perform correctly. Read the Manufacturer's Performance Data Sheet accompanying the system and change the filter as suggested. The contaminants or other substances removed or reduced by this water filter are not necessarily in all users' water.

NOTES

1. Projected chlorine taste and odor reduction capacity when tested in accordance with NSF/ANSI Standard 42 protocol.
2. Nominal particulate rating (5 µm) is for >85% of a given size as determined from single-pass particle counting results.*
3. Actual results obtained will vary with various combinations of organic contaminants, changes in pH or other conditions encountered in actual use.
4. All information presented here is based on data believed to be reliable. It is offered for evaluation and verification, but is not to be considered a warranty of any kind.
5. MATRIKX® FACT® filters are designed to fit most standard household and commercial or industrial housings.
6. This cartridge must be placed in an appropriate housing and flushed for a minimum of 5 minutes prior to use.
7. It is recommended that the filter be replaced when the flow is reduced or at least once a year.

* Nominal Filter Rating: Filter rating indicating the approximate size particle, the majority of which will not pass through the filter. It is generally interpreted as meaning that 85% of the particles of the size equal to the nominal micron rating will be retained by the filter. (WQA Glossary of Terms, Third Edition, 3-97).

WARNINGS

Maximum Operating Temperature: 125°F/51.67°C

MATRIKX® FACT® filters are not to be autoclaved or steam-sterilized. Use MATRIKX® FACT® carbon filters only with microbiologically safe and adequately disinfected water.

LIMITED LIABILITY

KX Technologies LLC makes no warranties of any kind, expressed or implied, statutory or otherwise, and expressly disclaims all warranties of every kind, concerning the product, including, without limitation, warranties of merchantability and fitness for a particular purpose, except that this product should be capable of performing as described in this product's data sheet. KX Technologies LLC's obligation shall be limited solely to the refund of the purchase price or replacement of the product proven defective, in KX Technologies LLC's sole discretion. Determination of suitability of this product for uses and applications contemplated by Buyer shall be the sole responsibility of Buyer. Use of this product constitutes Buyer's acceptance of this Limited Liability.



Tested and certified by WQA to NSF/ANSI 42 for material requirements only.

MADE IN THE U.S.A.
DISTRIBUTED BY:

QWaterFilters



55 Railroad Avenue • West Haven, CT 06516-4143 • Telephone: 203-799-9000 • Fax: 203-799-7000 • E-mail: sales@kxtech.com

KX Technologies Pte Ltd • No. 2 Serangoon North Avenue 5, #01-01 • Singapore 554911

This product is covered by one or more of the following United States Patents: 5,019,311; 5,147,722; 5,189,092; 5,249,948; 5,331,037; 5,922,803; 5,946,342; 6,061,384; and applicable foreign equivalents.

©2015 KX Technologies LLC. All rights reserved. KX, the KXT logo, MATRIKX, and the MATRIKX EXTRUDED CARBON seal, are registered trademarks, and VOC is a trademark of KX Technologies LLC.